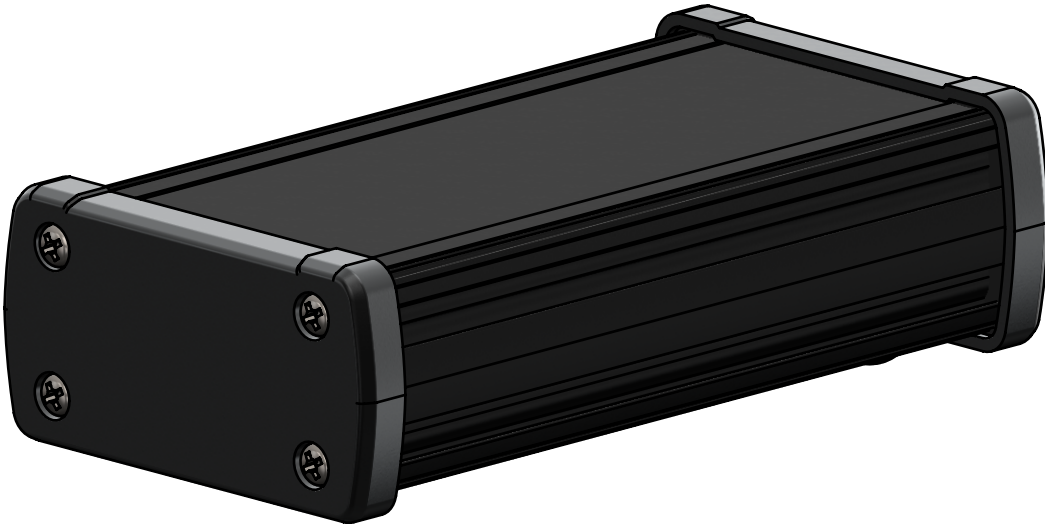
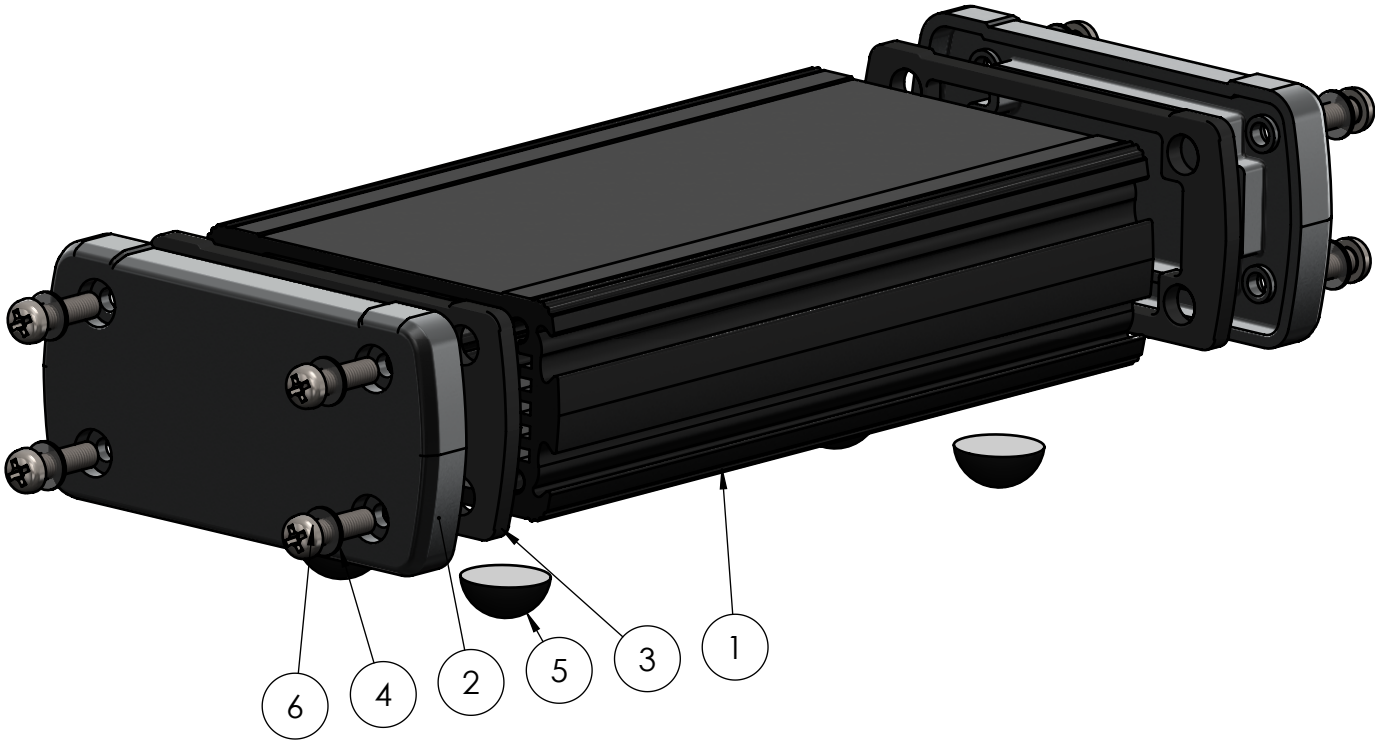




BOM Table						
ITEM NO.	PART NUMBER	Rev.	Description	Material	Color	EX-52-01/QTY.
1	EX-52B-01	-	EXTRUDED BODY, AL, BLACK	6063-T6	BLACK	1
2	EX-50E-01	-	END CAP, AL, BLACK	ALUMINUM ADC12	BLACK	2
3	EX-50G	-	EX GASKET	NEOPRENE	BLACK	2
4	EX-01W	-	WASHER	PC	CLEAR	8
5	EX-01A	-	ADHESIVE BUMPER	RUBBER	BLACK	4
6	EX-01S-01		M3.5-0.6 X 12 PHIL, PAN HD. SCREW	SST		8



UNLESS OTHERWISE SPECIFIED:
DIMENSIONS ARE IN: INCHES [mm]
TOLERANCES: ANGULAR: ±2°
TWO PLACE DECIMAL: ±.010
THREE PLACE DECIMAL: ±.005
PRINTED GRAPHICS: ±.010

PROPRIETARY AND CONFIDENTIAL
THE INFORMATION CONTAINED IN THIS
DRAWING IS THE SOLE PROPERTY OF
POLYCASE. ANY REPRODUCTION IN PART
OR AS A WHOLE WITHOUT THE WRITTEN
PERMISSION OF POLYCASE IS PROHIBITED.
CAD FILE: EX-52

PART NO.
EX-52-01

MATERIAL

FLAME RATING

DRAWN	NAME	DATE
CHECKED	D.M.F.	8/1/2017
	C.C.B.	8/29/2017

polycase

1305 CHESTER IND. PARKWAY AVON, OHIO 44011-1083 U.S.A.
PH#: 1-800-248-1233, 440-934-0444 FAX#: 440-934-0088

SIZE
B

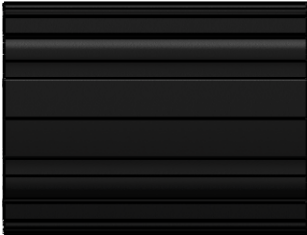
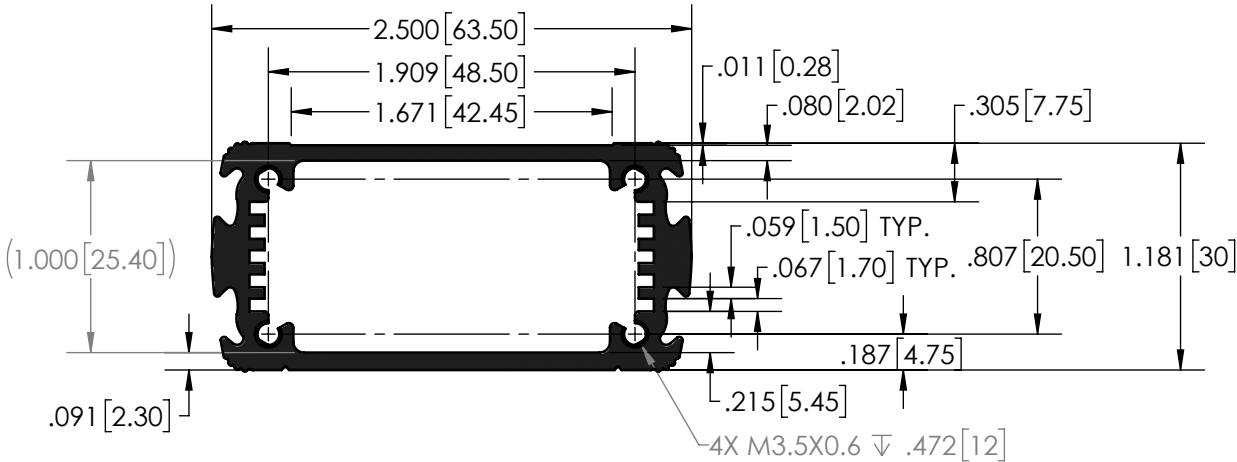
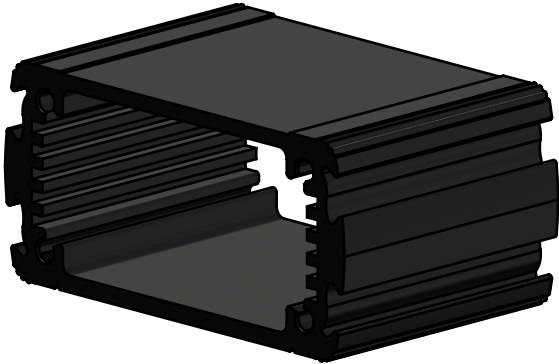
SCALE: 1:1


REV
-

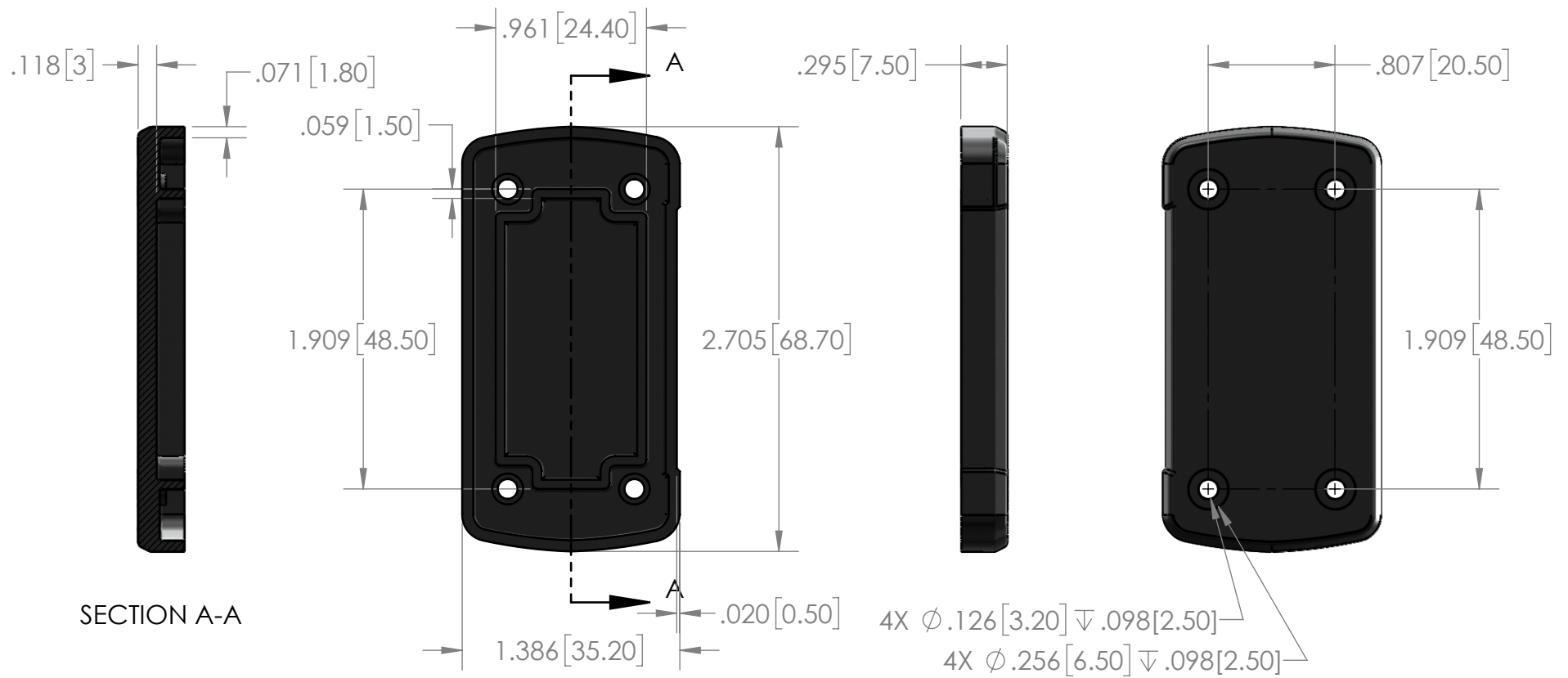
SHEET 1 OF 1

REV.	DESCRIPTION	ZONE	BY	APPR'D	DATE
	REVISIONS				

	LENGTH (mm)	DESCRIPTION	COLOR	MATERIAL
EX-50B-01	40	EXTRUDED BODY, AL, BLACK	BLACK	6063-T6
EX-51B-01	76	EXTRUDED BODY, AL, BLACK	BLACK	6063-T6
EX-52B-01	120	EXTRUDED BODY, AL, BLACK	BLACK	6063-T6



<div>UNLESS OTHERWISE SPECIFIED: DIMENSIONS ARE IN: INCHES[mm] TOLERANCES: ANGULAR: ±° TWO PLACE DECIMAL: ± THREE PLACE DECIMAL: ± PRINTED GRAPHICS: ±</div>						PART NO. AS NOTED		<div><div>polycase</div><div>1305 CHESTER IND. PARKWAY AVON, OHIO 44011-1083 U.S.A. PH#: 1-800-248-1233, 440-934-0444 FAX#: 440-934-0088</div></div>				
						MATERIAL -						
<div>PROPRIETARY AND CONFIDENTIAL THE INFORMATION CONTAINED IN THIS DRAWING IS THE SOLE PROPERTY OF POLYCASE. ANY REPRODUCTION IN PART OR AS A WHOLE WITHOUT THE WRITTEN PERMISSION OF POLYCASE IS PROHIBITED.</div> <div>CAD FILE: EX-50B-52B</div>						FLAME RATING		SIZE A	EXTRUDED BODY, AL, BLACK		REV -	
								NAME	DATE			
						DRAWN CHECKED		D.M.F. C.C.B.	8/1/2017 8/29/2017	SCALE: 1:1		
REV.	DESCRIPTION	ZONE	BY	APPR'D	DATE							
REVISIONS												



<div>UNLESS OTHERWISE SPECIFIED: DIMENSIONS ARE IN: INCHES[mm] TOLERANCES: ANGULAR: ±2° TWO PLACE DECIMAL: ±.010 THREE PLACE DECIMAL: ±.005 PRINTED GRAPHICS: ±.010</div>						PART NO. EX-50E-01			<div><div>polycase</div><div>1305 CHESTER IND. PARKWAY AVON, OHIO 44011-1083 U.S.A. PH#: 1-800-248-1233, 440-934-0444 FAX#: 440-934-0088</div></div>																	
						MATERIAL ALUMINUM ADC12																				
<div>PROPRIETARY AND CONFIDENTIAL THE INFORMATION CONTAINED IN THIS DRAWING IS THE SOLE PROPERTY OF POLYCASE. ANY REPRODUCTION IN PART OR AS A WHOLE WITHOUT THE WRITTEN PERMISSION OF POLYCASE IS PROHIBITED. CAD FILE: EX-50E</div>						FLAME RATING			SIZE A	END CAP, AL, BLACK		REV -														
						REV.			DESCRIPTION			ZONE	BY	APPR'D	DATE											
REVISIONS																										
5						4						3						2						1		