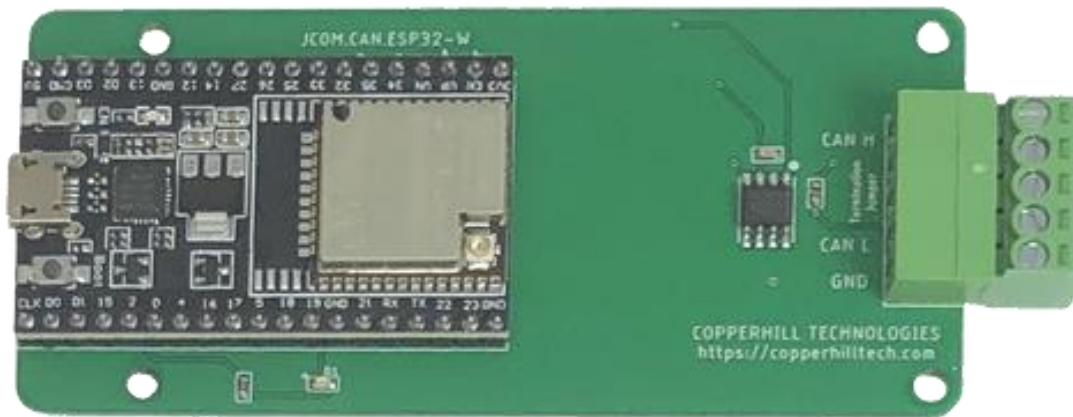




JCOM.CAN.ESP32-W Firmware Update



Note: The firmware update works only for these SAE J1939 devices:

1. [SAE J1939 ECU Simulator Board with USB Port...](#)
2. [SAE J1939 Starter Kit and Network Simulator...](#)

Firmware History

V xx.yy.zz

xx = Major Modifications

yy = Minor Modifications

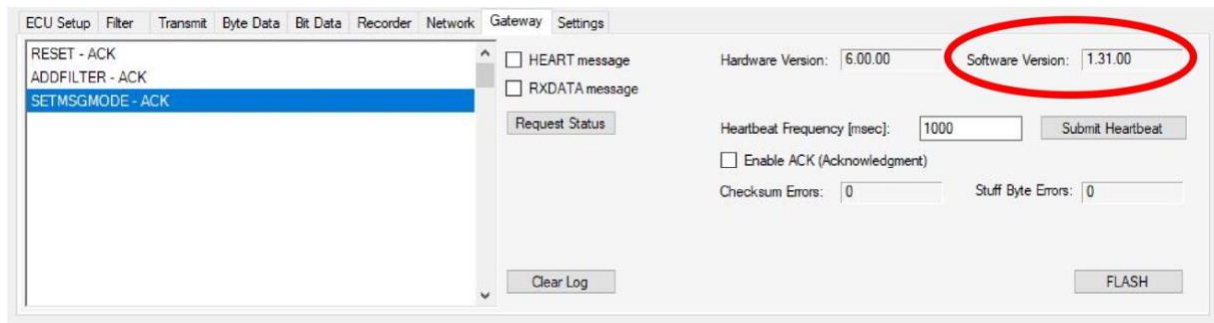
zz = Bug Fixes

Updating the JCOM.J1939.USB-B Firmware

To update the firmware, please follow the steps as described here:

1. Check the Firmware Version Number

In the JCOM1939 Monitor software, select the “Gateway” tab. Please make sure, the communication with the gateway was initiated by clicking the “Start COM” command button, otherwise the gateway will not report the firmware version.



In the upper right position of the tab, check the Software Version number and verify it with the newest version.

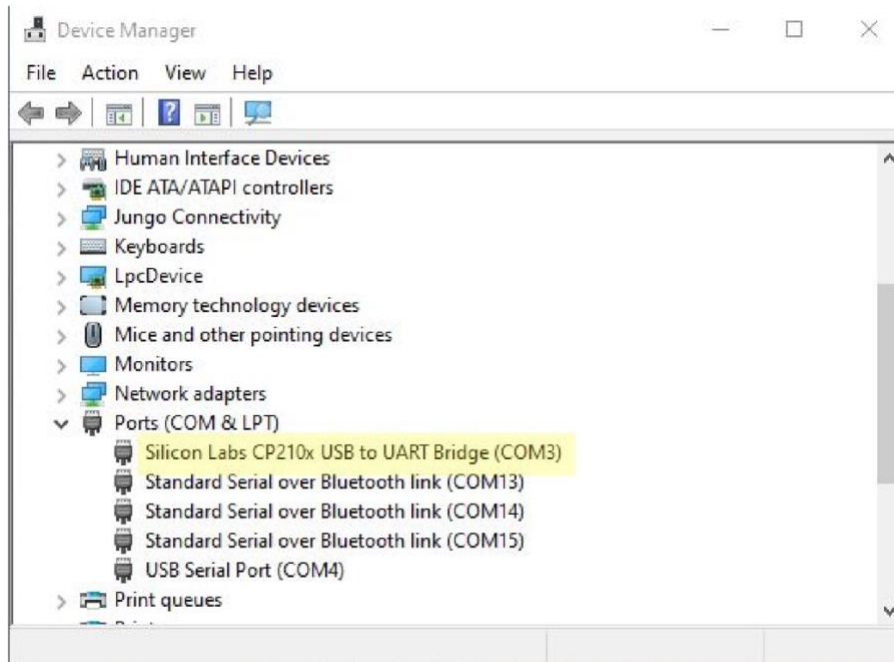
2. Download the Firmware File

To update the device’s software (i.e., the firmware), we provide a .bin file that can be loaded directly per USB port (see the following steps). Please store this file into a folder of your choice.

- [Download the .bin firmware file...](#)

3. Update the firmware using the ESP32 Flash Tool

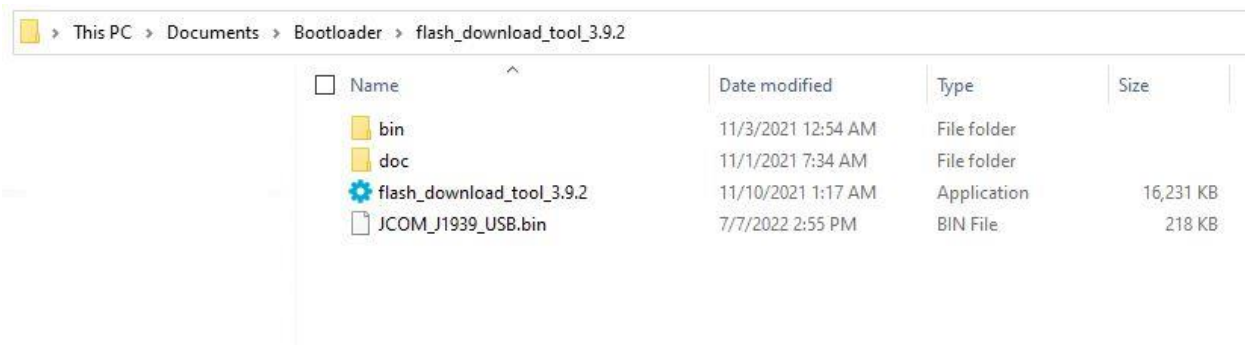
First, connect the JCOM gateway board to your PC (USB port) and verify the COM Port number per Device Manager.



Unless you have already done so, you need to download the ESP32 Flash Tool:

- [Download the ESP32 Flash Tool \(.zip\)...](#)

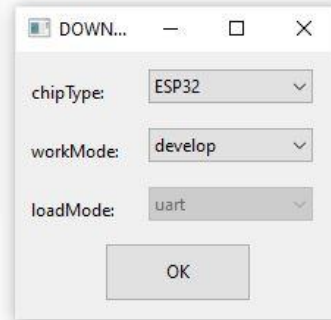
Extract the file in a folder of your choice. Please note that the tool does not require an installation process. The zip file contains an executable file (flash_download_tool_3.9.2.exe) that will run on your Windows PC when activated per double-click.



In the above example, we stored the files in a folder under *Documents*.

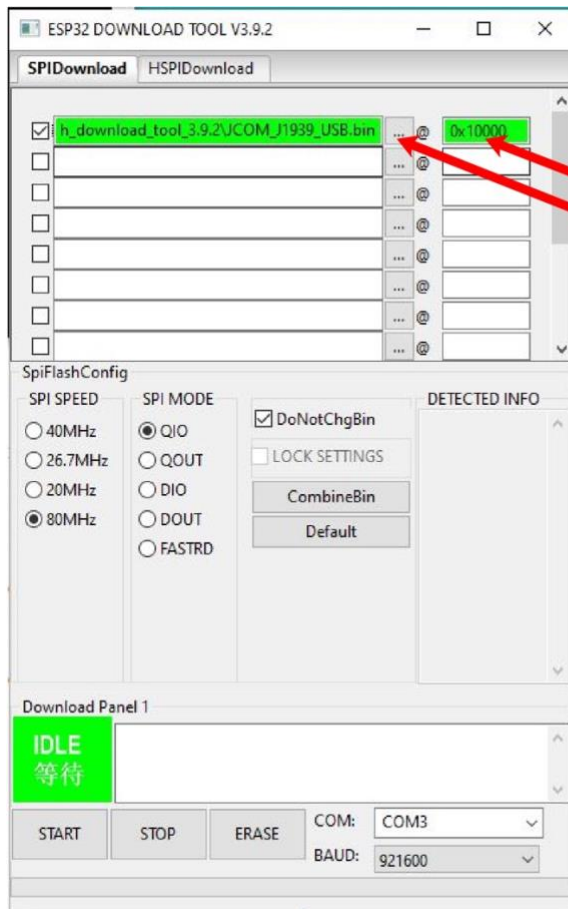
Important! Do not run the executable file through a network connection or on a virtual machine! It will not operate properly in such environments.

Double-click on the executable file to run it. The following screen will appear:



Select "ESP32" as the "chipType," then click *OK*.

In the following screen, make sure all settings are as shown here:



Enter Address 0x10000

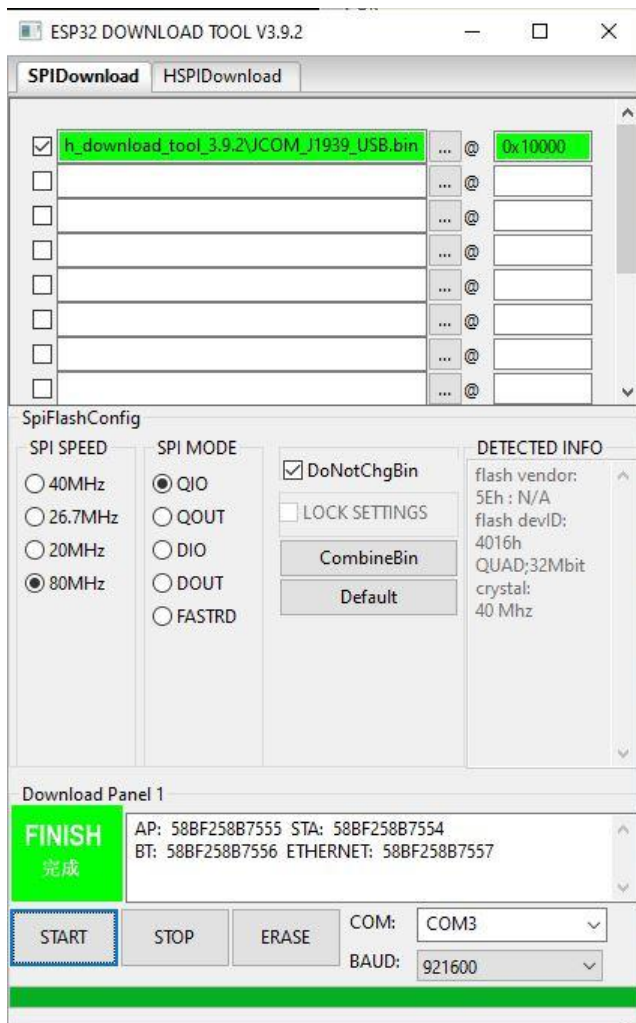
Click here to select the .bin file

Please make sure you check the box next to the filename. Both boxes, for the filename and the address, should be green.

In this example, the COM port is shown as COM3, which is the default setting for the JCOM gateway board. It may, however, differ on your computer.

Select a baudrate of 921600.

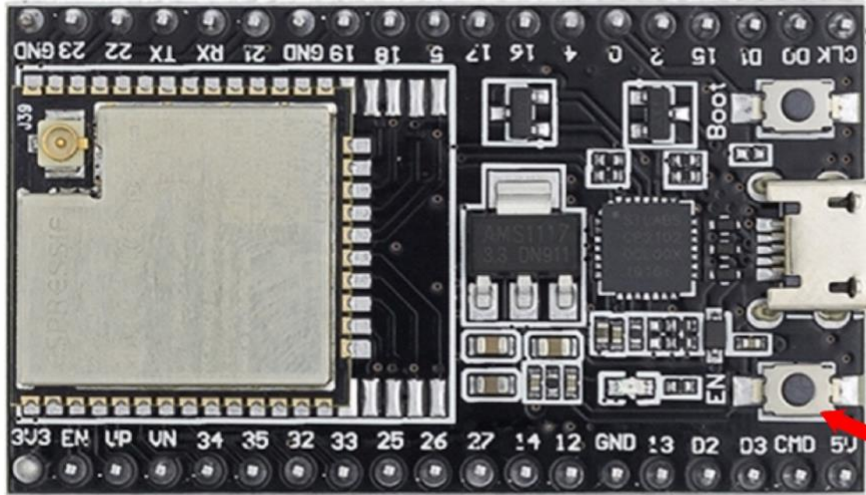
To program the firmware, click the *START* button.



During the firmware loading (flash) cycle, the onboard LED will dim, indicating the flash procedure.

4. Reset the Gateway

After successful firmware update, you need to reset the device by either pushing the onboard *Reset* button or by removing the USB connector and reconnecting it (power off-on cycle).



Reset Button

Please verify the new version number as described previously.